



# **Appendix B13**

## ESB Asset Alterations

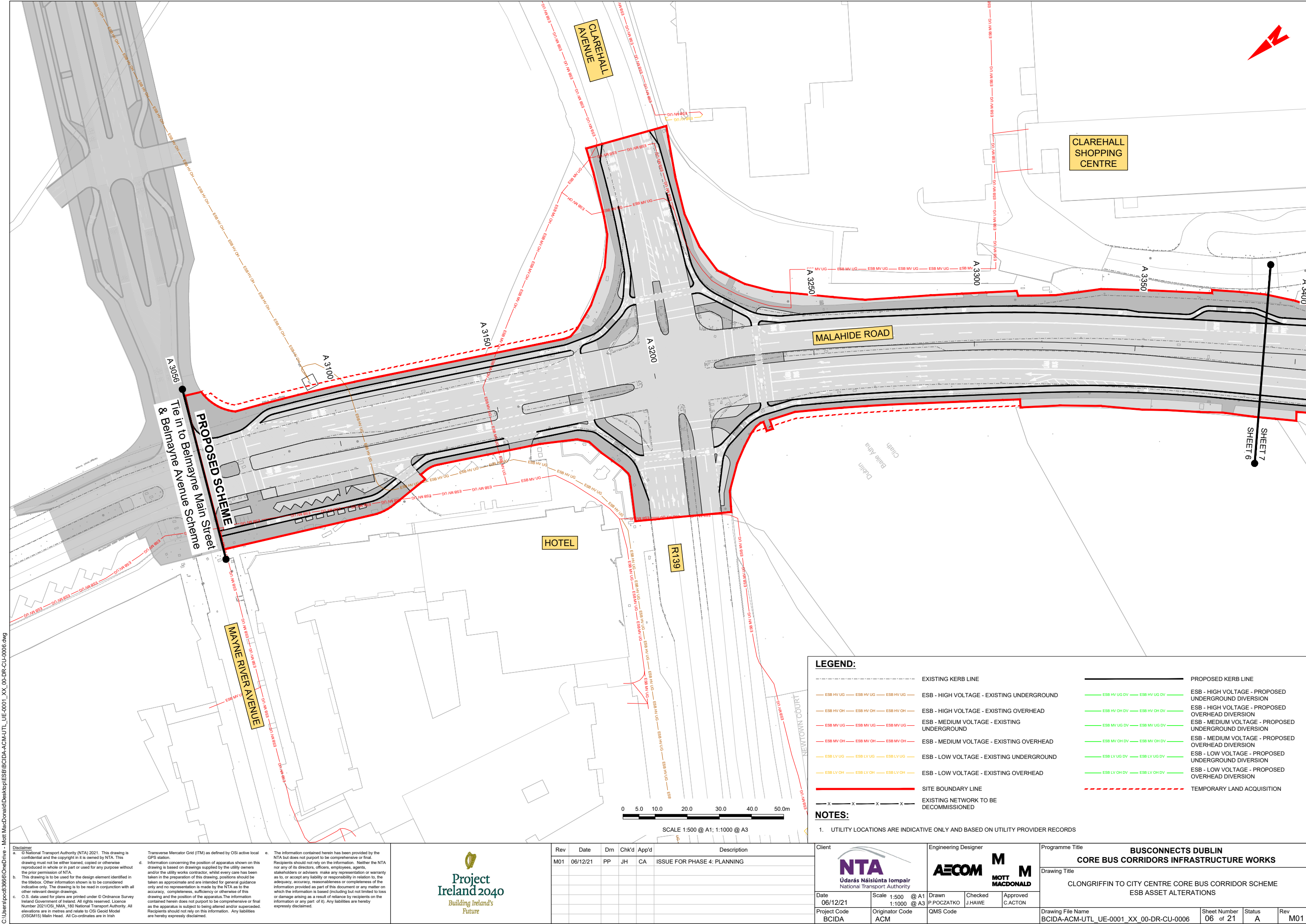












LEGEND:

- EXISTING KERB LINE
- PROPOSED KERB LINE
- ESB - HIGH VOLTAGE - EXISTING UNDERGROUND
- ESB - HIGH VOLTAGE - EXISTING OVERHEAD
- ESB - MEDIUM VOLTAGE - EXISTING UNDERGROUND
- ESB - MEDIUM VOLTAGE - EXISTING OVERHEAD
- ESB - LOW VOLTAGE - EXISTING UNDERGROUND
- ESB - LOW VOLTAGE - EXISTING OVERHEAD
- SITE BOUNDARY LINE
- EXISTING NETWORK TO BE DECOMMISSIONED
- ESB - HIGH VOLTAGE - PROPOSED UNDERGROUND DIVERSION
- ESB - HIGH VOLTAGE - PROPOSED OVERHEAD DIVERSION
- ESB - MEDIUM VOLTAGE - PROPOSED UNDERGROUND DIVERSION
- ESB - MEDIUM VOLTAGE - PROPOSED OVERHEAD DIVERSION
- ESB - LOW VOLTAGE - PROPOSED UNDERGROUND DIVERSION
- ESB - LOW VOLTAGE - PROPOSED OVERHEAD DIVERSION
- TEMPORARY LAND ACQUISITION

NOTES:

- UTILITY LOCATIONS ARE INDICATIVE ONLY AND BASED ON UTILITY PROVIDER RECORDS

**Disclaimer**

a. © National Transport Authority (NTA) 2021. This drawing is confidential and the copyright in it is owned by NTA. This drawing must not be either loaned, copied or otherwise reproduced in whole or in part or used for any purpose without the prior permission of NTA.

b. This drawing is to be used for the design element identified in the titlebox. Other information shown is to be considered indicative only. The drawing is to be read in conjunction with all other relevant design drawings.




c. O.S. data used for plans are printed under © Ordnance Survey Ireland Government of Ireland. All rights reserved. Licence Number 2021/OSI\_NMA\_180 National Transport Authority. All elevations are in metres and relate to OSI Geoid Model (OSGM15) Mean Head. All Co-ordinates are in Irish Transverse Mercator Grid (ITM) as defined by OSI active local GPS station.

d. Information concerning the position of apparatus shown on this drawing is based on drawings supplied by the utility owners and/or the utility works contractor, whilst every care has been taken in the preparation of this drawing, positions should be taken as approximate and are intended for general guidance only and no representation is made by the NTA as to the accuracy, completeness, sufficiency or otherwise of this drawing and the position of the apparatus. The information contained herein does not purport to be comprehensive or final as the apparatus is subject to being altered and/or superceded. Recipients should not rely on this information. Any liabilities are hereby expressly disclaimed.

e. The information contained herein has been provided by the NTA but does not purport to be comprehensive or final. Recipients should not rely on the information. Neither the NTA nor any of its directors, officers, employees, agents, stakeholders or advisers make any representation or warranty as to, or accept any liability or responsibility in relation to, the adequacy, accuracy, reasonableness or completeness of the information provided as part of this document or any matter on which the information is based (including but not limited to loss or damage arising as a result of reliance by recipients on the information or any part of it). Any liabilities are hereby expressly disclaimed.



Rev	Date	Drm	Chk'd	App'd	Description
M01	06/12/21	PP	JH	CA	ISSUE FOR PHASE 4: PLANNING

Client		Engineering Designer			
 <b>NTA</b> Udarás Náisiúnta Iompair National Transport Authority		 <b>AECOM</b>		 <b>MOTT MACDONALD</b>	
Date 06/12/21	Scale 1:500 @ A1 1:1000 @ A3	Drawn P.POCZATKO	Checked J.H.AWE	Approved C.ACTON	
Project Code BCIDA	Originator Code ACM	QMS Code			

Programme Title <b>BUSCONNECTS DUBLIN CORE BUS CORRIDORS INFRASTRUCTURE WORKS</b>			
Drawing Title CLONGRIFFIN TO CITY CENTRE CORE BUS CORRIDOR SCHEME ESB ASSET ALTERATIONS			
Drawing File Name BCIDA-ACM-UTL_UE-0001_XX_00-DR-CU-0006	Sheet Number 06 of 21	Status A	Rev M01

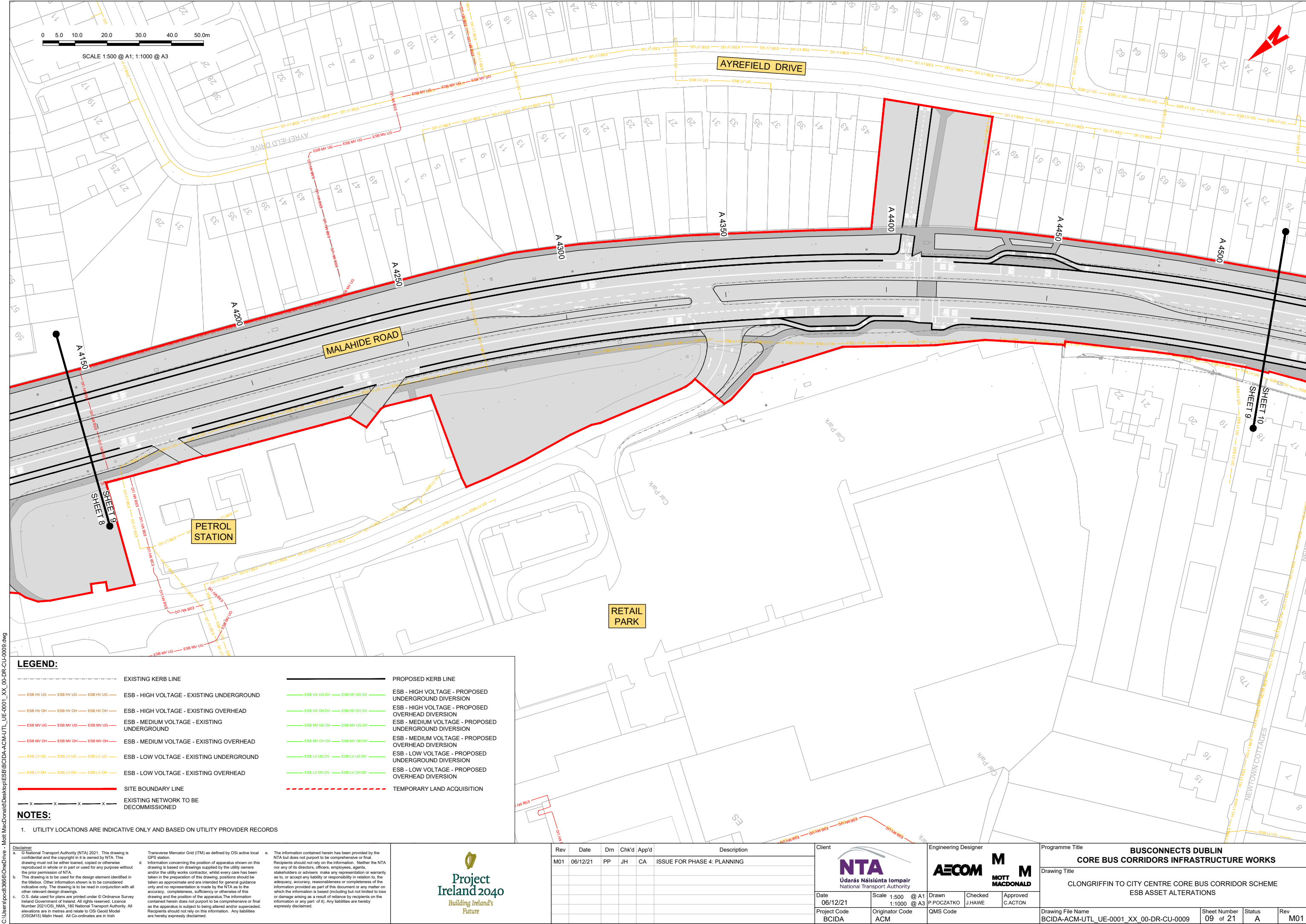












LEGEND:

- EXISTING KERB LINE

ESB - HIGH VOLTAGE - EXISTING UNDERGROUND

ESB - HIGH VOLTAGE - EXISTING OVERHEAD

ESB - MEDIUM VOLTAGE - EXISTING UNDERGROUND

ESB - MEDIUM VOLTAGE - EXISTING OVERHEAD

ESB - LOW VOLTAGE - EXISTING UNDERGROUND

ESB - LOW VOLTAGE - EXISTING OVERHEAD

SITE BOUNDARY LINE

EXISTING NETWORK TO BE DECOMMISSIONED
- PROPOSED KERB LINE

ESB - HIGH VOLTAGE - PROPOSED UNDERGROUND DIVERSION

ESB - HIGH VOLTAGE - PROPOSED OVERHEAD DIVERSION

ESB - MEDIUM VOLTAGE - PROPOSED UNDERGROUND DIVERSION

ESB - MEDIUM VOLTAGE - PROPOSED OVERHEAD DIVERSION

ESB - LOW VOLTAGE - PROPOSED UNDERGROUND DIVERSION

ESB - LOW VOLTAGE - PROPOSED OVERHEAD DIVERSION

TEMPORARY LAND ACQUISITION


NOTES:


1. UTILITY LOCATIONS ARE INDICATIVE ONLY AND BASED ON UTILITY PROVIDER RECORDS

**Disclaimer**  
a. © National Transport Authority (NTA) 2021. This drawing is confidential and the copyright in it is owned by NTA. This drawing must not be either loaned, copied or otherwise reproduced in whole or in part or used for any purpose without the prior permission of NTA.  
b. This drawing is to be used for the design element identified in the titleblock. Other information shown is to be considered indicative only. The drawing is to be read in conjunction with all other relevant design drawings.  
c. O.S. data used for plans are printed under © Ordnance Survey Ireland Government of Ireland. All rights reserved. Licence Number 2021/OSI\_NMA\_180 National Transport Authority. All elevations are in metres and relate to OSI Geoid Model (OSGM15) Mean Head. All Co-ordinates are in Irish Transverse Mercator Grid (ITM) as defined by OSI active local GPS station.  
d. Information concerning the position of apparatus shown on this drawing is based on drawings supplied by the utility owners and/or the utility works contractor, whilst every care has been taken in the preparation of this drawing, positions should be taken as approximate and are intended for general guidance only and no representation is made by the NTA as to the accuracy, completeness, sufficiency or otherwise of this drawing and the position of the apparatus. The information contained herein does not purport to be comprehensive or final as the apparatus is subject to being altered and/or superseded. Recipients should not rely on this information. Any liabilities are hereby expressly disclaimed.  
e. The information contained herein has been provided by the NTA but does not purport to be comprehensive or final. Recipients should not rely on the information. Neither the NTA nor any of its directors, officers, employees, agents, stakeholders or advisers make any representation or warranty as to, or accept any liability or responsibility in relation to, the adequacy, accuracy, reasonableness or completeness of the information provided as part of this document or any matter on which the information is based (including but not limited to loss or damage arising as a result of reliance by recipients on the information or any part of it). Any liabilities are hereby expressly disclaimed.



Rev	Date	Drm	Chk'd	App'd	Description
M01	06/12/21	PP	JH	CA	ISSUE FOR PHASE 4: PLANNING

Client	
 Údarás Náisiúnta Iompair National Transport Authority	
Date	Scale
06/12/21	1:500 @ A1 1:1000 @ A3
Project Code	Originator Code
BCIDA	ACM

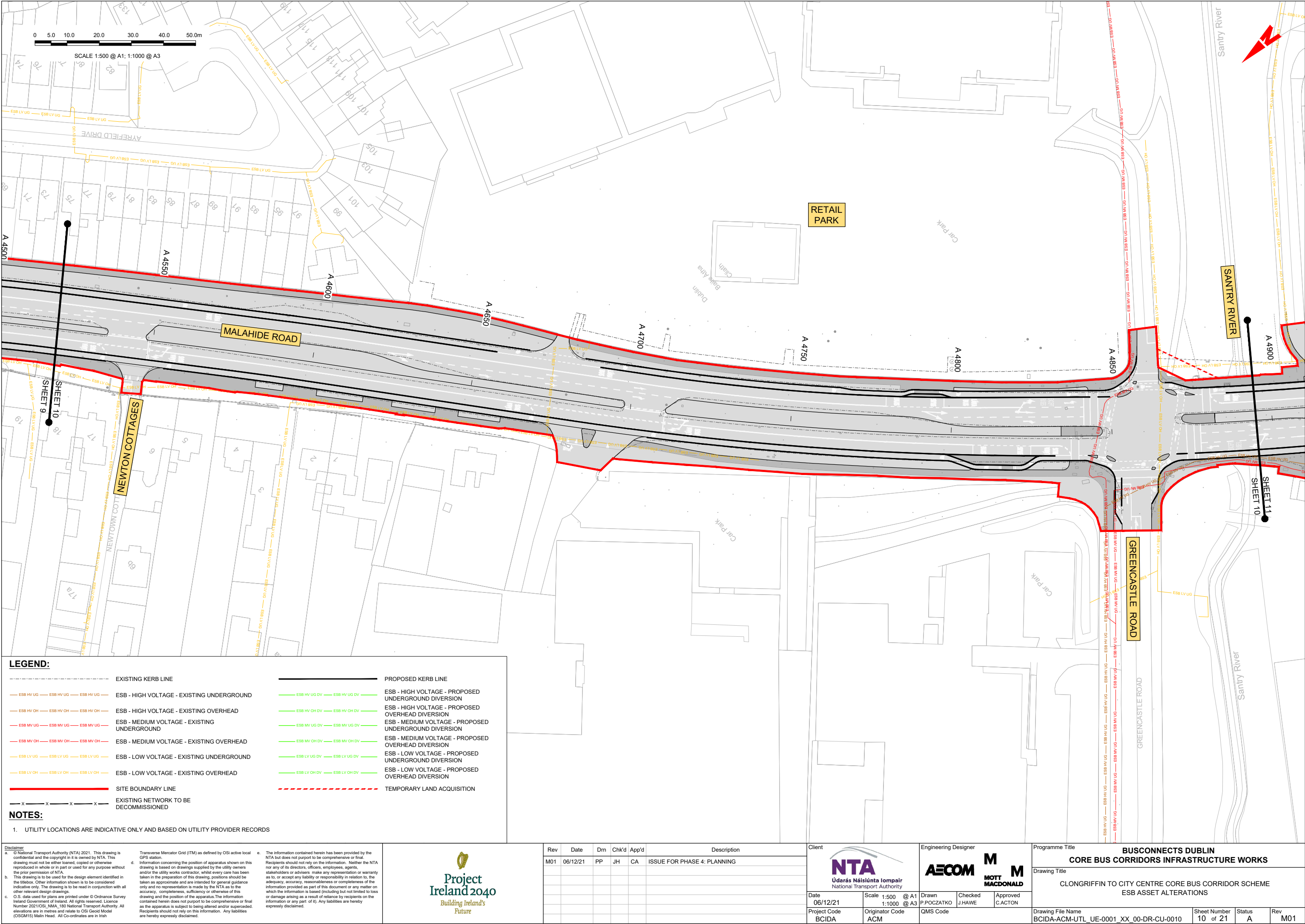
Engineering Designer	
 P.POCZATKO Checked J.HAWE Approved C.ACTON	
Drawn	Checked
P.POCZATKO	J.HAWE
QMS Code	Approved
	C.ACTON

Programme Title			
BUSCONNECTS DUBLIN CORE BUS CORRIDORS INFRASTRUCTURE WORKS			
Drawing Title			
CLONGRIFFIN TO CITY CENTRE CORE BUS CORRIDOR SCHEME ESB ASSET ALTERATIONS			
Drawing File Name		Sheet Number	Status
BCIDA-ACM-UTL_UE-0001_XX_00-DR-CU-0009		09 of 21	A
Rev		M01	

DO NOT SCALE USE FIGURED DIMENSIONS ONLY



C:\Users\jpc263666\OneDrive - Mott MacDonald\Desktop\ESB\BCIDA-ACM\U\_TL\_UE-0001\_XX\_00-DR-CU-0010.dwg



**LEGEND:**

---

EXISTING KERB LINE

— x — x — x — x —

EXISTING NETWORK TO BE DECOMMISSIONED

— ESB HV UG — ESB HV UG — ESB HV UG —

ESB - HIGH VOLTAGE - EXISTING UNDERGROUND

— ESB HV OH — ESB HV OH — ESB HV OH —

ESB - HIGH VOLTAGE - EXISTING OVERHEAD

— ESB MV UG — ESB MV UG — ESB MV UG —

ESB - MEDIUM VOLTAGE - EXISTING UNDERGROUND

— ESB MV OH — ESB MV OH — ESB MV OH —

ESB - MEDIUM VOLTAGE - EXISTING OVERHEAD

— ESB LV UG — ESB LV UG — ESB LV UG —

ESB - LOW VOLTAGE - EXISTING UNDERGROUND

— ESB LV OH — ESB LV OH — ESB LV OH —

ESB - LOW VOLTAGE - EXISTING OVERHEAD

—

PROPOSED KERB LINE

— ESB HV UG DV — ESB HV UG DV —

ESB - HIGH VOLTAGE - PROPOSED UNDERGROUND DIVERSION

— ESB HV OH DV — ESB HV OH DV —

ESB - HIGH VOLTAGE - PROPOSED OVERHEAD DIVERSION

— ESB MV UG DV — ESB MV UG DV —

ESB - MEDIUM VOLTAGE - PROPOSED UNDERGROUND DIVERSION

— ESB MV OH DV — ESB MV OH DV —

ESB - MEDIUM VOLTAGE - PROPOSED OVERHEAD DIVERSION

— ESB LV UG DV — ESB LV UG DV —

ESB - LOW VOLTAGE - PROPOSED UNDERGROUND DIVERSION

— ESB LV OH DV — ESB LV OH DV —

ESB - LOW VOLTAGE - PROPOSED OVERHEAD DIVERSION

---

TEMPORARY LAND ACQUISITION

**NOTES:**

- UTILITY LOCATIONS ARE INDICATIVE ONLY AND BASED ON UTILITY PROVIDER RECORDS

**Disclaimer**

a. © National Transport Authority (NTA) 2021. This drawing is confidential and the copyright in it is owned by NTA. This drawing must not be either loaned, copied or otherwise reproduced in whole or in part or used for any purpose without the prior permission of NTA.

b. This drawing is to be used for the design element identified in the titleblock. Other information shown is to be considered indicative only. The drawing is to be read in conjunction with all other relevant design drawings.

c. O.S. data used for plans are printed under © Ordnance Survey Ireland Government of Ireland. All rights reserved. Licence Number 2021/OSI\_NMA\_180 National Transport Authority. All elevations are in metres and relate to OSI Geoid Model (OSGM15) Mean Head. All Co-ordinates are in Irish Transverse Mercator Grid (ITM) as defined by OSI active local GPS station.

d. Information concerning the position of apparatus shown on this drawing is based on drawings supplied by the utility owners and/or the utility works contractor, whilst every care has been taken in the preparation of this drawing, positions should be taken as approximate and are intended for general guidance only and no representation is made by the NTA as to the accuracy, completeness, sufficiency or otherwise of this drawing and the position of the apparatus. The information contained herein does not purport to be comprehensive or final as the apparatus is subject to being altered and/or superceded. Recipients should not rely on this information. Any liabilities are hereby expressly disclaimed.

e. The information contained herein has been provided by the NTA but does not purport to be comprehensive or final. Recipients should not rely on the information. Neither the NTA nor any of its directors, officers, employees, agents, stakeholders or advisers make any representation or warranty as to, or accept any liability or responsibility in relation to, the adequacy, accuracy, reasonableness or completeness of the information provided as part of this document or any matter on which the information is based (including but not limited to loss or damage arising as a result of reliance by recipients on the information or any part of it). Any liabilities are hereby expressly disclaimed.

**Project Ireland 2040**  
Building Ireland's Future

Rev	Date	Drm	Chk'd	App'd	Description
M01	06/12/21	PP	JH	CA	ISSUE FOR PHASE 4: PLANNING

Client

Údarás Náisiúnta Iompair  
National Transport Authority

Engineering Designer

Date

06/12/21

Scale

1:500 @ A1  
1:1000 @ A3

Drawn

P.POCZATKO

Checked

J.HAWE

Approved

C.ACTON

Project Code

BCIDA

Originator Code

ACM

QMS Code

Programme Title

BUSCONNECTS DUBLIN  
CORE BUS CORRIDORS INFRASTRUCTURE WORKS

Drawing Title

CLONGRIFFIN TO CITY CENTRE CORE BUS CORRIDOR SCHEME  
ESB ASSET ALTERATIONS

Drawing File Name

BCIDA-ACM-UTL\_UE-0001\_XX\_00-DR-CU-0010

Sheet Number

10 of 21

Status

A

Rev

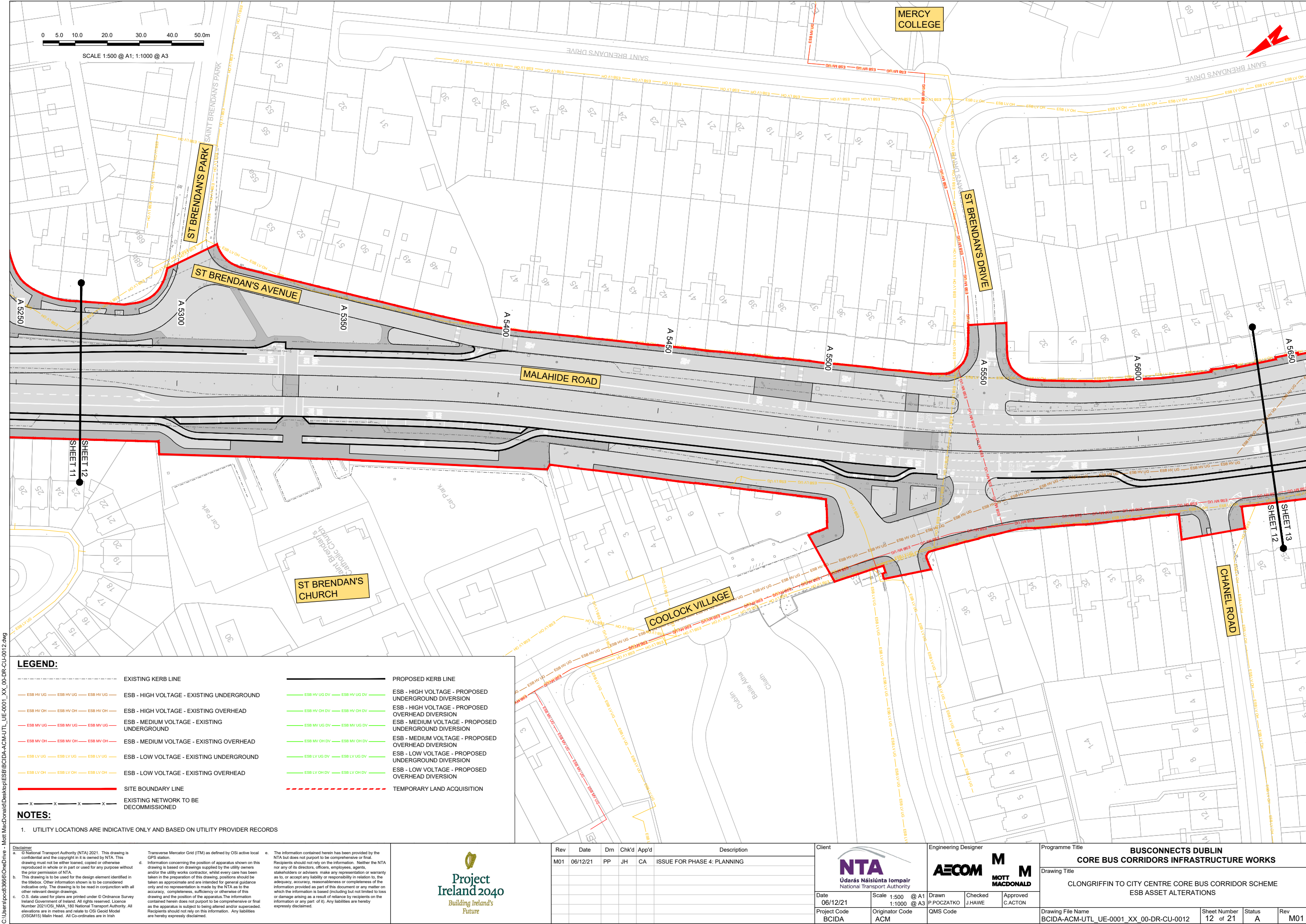
M01

DO NOT SCALE USE FIGURED DIMENSIONS ONLY









LEGEND:

- ESB HV UG

ESB HV OH

ESB MV UG

ESB MV OH

ESB LV UG

ESB LV OH
- EXISTING KERB LINE

ESB - HIGH VOLTAGE - EXISTING UNDERGROUND

ESB - HIGH VOLTAGE - EXISTING OVERHEAD

ESB - MEDIUM VOLTAGE - EXISTING UNDERGROUND

ESB - MEDIUM VOLTAGE - EXISTING OVERHEAD

ESB - LOW VOLTAGE - EXISTING UNDERGROUND

ESB - LOW VOLTAGE - EXISTING OVERHEAD

SITE BOUNDARY LINE

EXISTING NETWORK TO BE DECOMMISSIONED
- ESB HV UG DV

ESB HV OH DV

ESB MV UG DV

ESB MV OH DV

ESB LV UG DV

ESB LV OH DV
- PROPOSED KERB LINE

ESB - HIGH VOLTAGE - PROPOSED UNDERGROUND DIVERSION

ESB - HIGH VOLTAGE - PROPOSED OVERHEAD DIVERSION

ESB - MEDIUM VOLTAGE - PROPOSED UNDERGROUND DIVERSION

ESB - MEDIUM VOLTAGE - PROPOSED OVERHEAD DIVERSION

ESB - LOW VOLTAGE - PROPOSED UNDERGROUND DIVERSION

ESB - LOW VOLTAGE - PROPOSED OVERHEAD DIVERSION

TEMPORARY LAND ACQUISITION

NOTES:

1. UTILITY LOCATIONS ARE INDICATIVE ONLY AND BASED ON UTILITY PROVIDER RECORDS

**Disclaimer**

a. © National Transport Authority (NTA) 2021. This drawing is confidential and the copyright in it is owned by NTA. This drawing must not be either loaned, copied or otherwise reproduced in whole or in part or used for any purpose without the prior permission of NTA.

b. This drawing is to be used for the design element identified in the titlebox. Other information shown is to be considered indicative only. The drawing is to be read in conjunction with all other relevant design drawings.

c. O.S. data used for plans are printed under © Ordnance Survey Ireland Government of Ireland. All rights reserved. Licence Number 2021/OSI\_NMA\_180 National Transport Authority. All elevations are in metres and relate to OSI Geoid Model (OSGM15) Mean Head. All Co-ordinates are in Irish Transverse Mercator Grid (ITM) as defined by OSI active local GPS station.

d. Information concerning the position of apparatus shown on this drawing is based on drawings supplied by the utility owners and/or the utility works contractor, whilst every care has been taken in the preparation of this drawing, positions should be taken as approximate and are intended for general guidance only and no representation is made by the NTA as to the accuracy, completeness, sufficiency or otherwise of this drawing and the position of the apparatus. The information contained herein does not purport to be comprehensive or final as the apparatus is subject to being altered and/or superseded. Recipients should not rely on this information. Any liabilities are hereby expressly disclaimed.

e. The information contained herein has been provided by the NTA but does not purport to be comprehensive or final. Recipients should not rely on the information. Neither the NTA nor any of its directors, officers, employees, agents, stakeholders or advisers make any representation or warranty as to, or accept any liability or responsibility in relation to, the adequacy, accuracy, reasonableness or completeness of the information provided as part of this document or any matter on which the information is based (including but not limited to loss or damage arising as a result of reliance by recipients on the information or any part of it). Any liabilities are hereby expressly disclaimed.

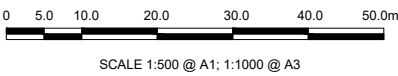
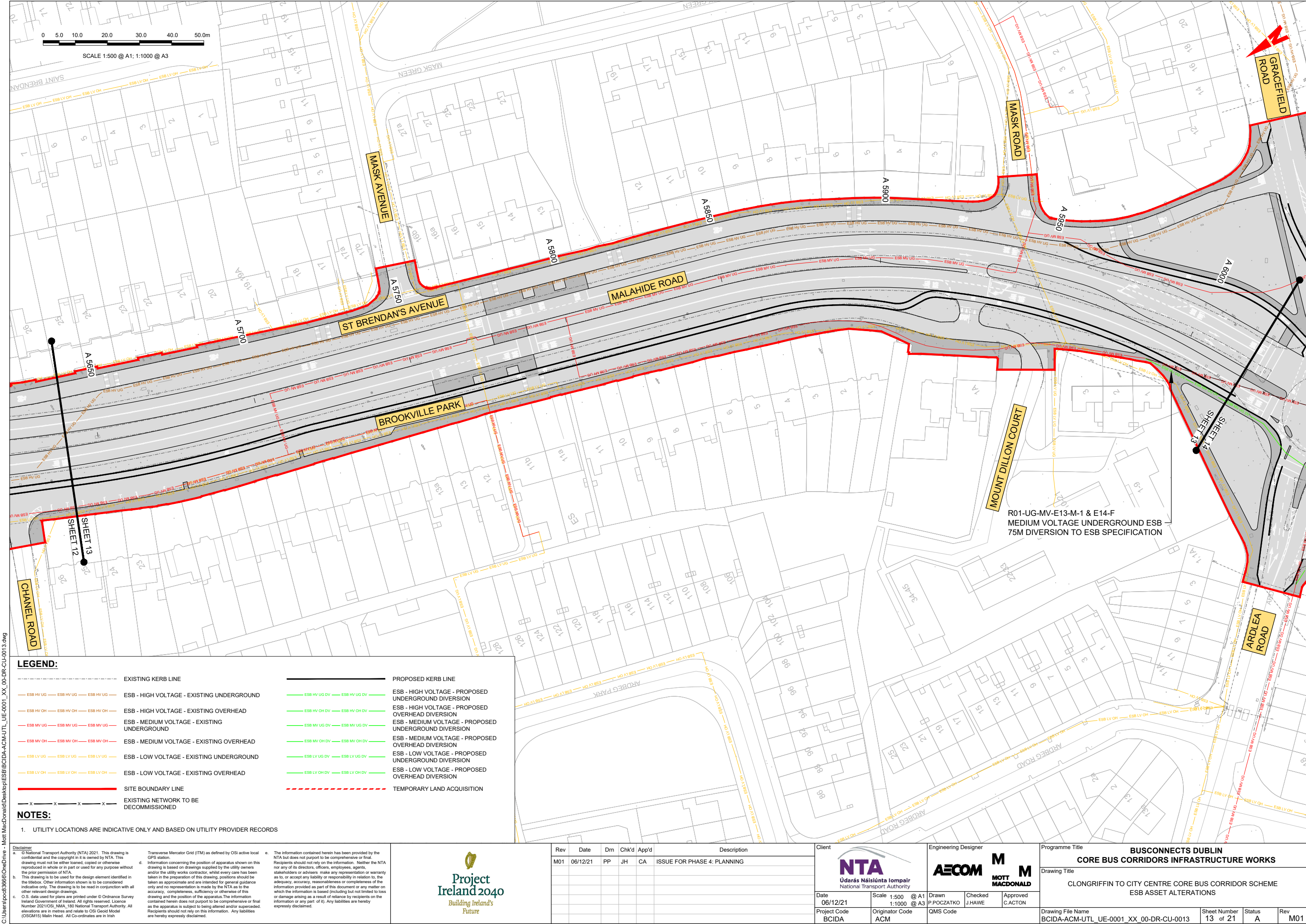


Rev	Date	Drm	Chk'd	App'd	Description
M01	06/12/21	PP	JH	CA	ISSUE FOR PHASE 4: PLANNING

Client <b>NTA</b> Údarás Náisiúnta Iompair National Transport Authority		Engineering Designer <b>AECOM</b> <b>MOTT MACDONALD</b>			Programme Title <b>BUSCONNECTS DUBLIN</b> <b>CORE BUS CORRIDORS INFRASTRUCTURE WORKS</b>			
Date 06/12/21	Scale 1:500 @ A1 1:1000 @ A3	Drawn P.POCZATKO	Checked J.HAWE	Approved C.ACTON	Drawing Title CLONGRIFFIN TO CITY CENTRE CORE BUS CORRIDOR SCHEME ESB ASSET ALTERATIONS			
Project Code BCIDA	Originator Code ACM	QMS Code			Drawing File Name BCIDA-ACM-UTL_UE-0001_XX_00-DR-CU-0012	Sheet Number 12 of 21	Status A	Rev M01

DO NOT SCALE USE FIGURED DIMENSIONS ONLY





LEGEND:

- EXISTING KERB LINE

EXISTING NETWORK TO BE DECOMMISSIONED
- ESB - HIGH VOLTAGE - EXISTING UNDERGROUND

ESB - HIGH VOLTAGE - EXISTING OVERHEAD

ESB - MEDIUM VOLTAGE - EXISTING UNDERGROUND

ESB - MEDIUM VOLTAGE - EXISTING OVERHEAD

ESB - LOW VOLTAGE - EXISTING UNDERGROUND

ESB - LOW VOLTAGE - EXISTING OVERHEAD
- PROPOSED KERB LINE

ESB - HIGH VOLTAGE - PROPOSED UNDERGROUND DIVERSION

ESB - HIGH VOLTAGE - PROPOSED OVERHEAD DIVERSION

ESB - MEDIUM VOLTAGE - PROPOSED UNDERGROUND DIVERSION

ESB - MEDIUM VOLTAGE - PROPOSED OVERHEAD DIVERSION

ESB - LOW VOLTAGE - PROPOSED UNDERGROUND DIVERSION

ESB - LOW VOLTAGE - PROPOSED OVERHEAD DIVERSION

TEMPORARY LAND ACQUISITION

NOTES:

1. UTILITY LOCATIONS ARE INDICATIVE ONLY AND BASED ON UTILITY PROVIDER RECORDS

**Disclaimer**

a. © National Transport Authority (NTA) 2021. This drawing is confidential and the copyright in it is owned by NTA. This drawing must not be either loaned, copied or otherwise reproduced in whole or in part or used for any purpose without the prior permission of NTA.

b. This drawing is to be used for the design element identified in the titleblock. Other information shown is to be considered indicative only. The drawing is to be read in conjunction with all other relevant design drawings.

c. O.S. data used for plans are printed under © Ordnance Survey Ireland Government of Ireland. All rights reserved. Licence Number 2021/OSI\_NMA\_180 National Transport Authority. All elevations are in metres and relate to OSI Geoid Model (OSGM15) Mean Head. All Co-ordinates are in Irish Transverse Mercator Grid (ITM) as defined by OSI active local GPS station.

d. Information concerning the position of apparatus shown on this drawing is based on drawings supplied by the utility owners and/or the utility works contractor, whilst every care has been taken in the preparation of this drawing, positions should be taken as approximate and are intended for general guidance only and no representation is made by the NTA as to the accuracy, completeness, sufficiency or otherwise of this drawing and the position of the apparatus. The information contained herein does not purport to be comprehensive or final as the apparatus is subject to being altered and/or superseded. Recipients should not rely on this information. Any liabilities are hereby expressly disclaimed.

e. The information contained herein has been provided by the NTA but does not purport to be comprehensive or final. Recipients should not rely on the information. Neither the NTA nor any of its directors, officers, employees, agents, stakeholders or advisers make any representation or warranty as to, or accept any liability or responsibility in relation to, the adequacy, accuracy, reasonableness or completeness of the information provided as part of this document or any matter on which the information is based (including but not limited to loss or damage arising as a result of reliance by recipients on the information or any part of it). Any liabilities are hereby expressly disclaimed.



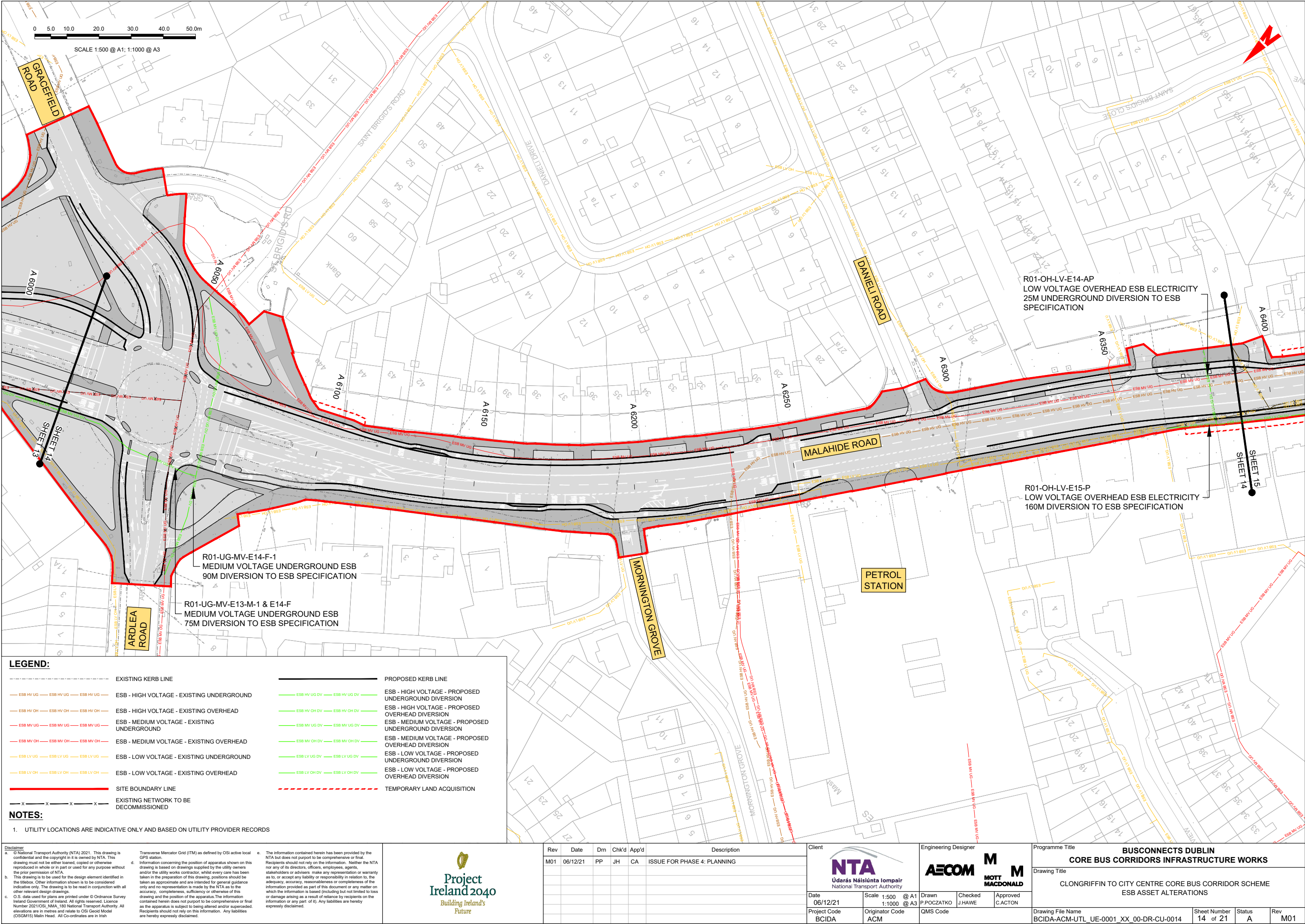
Rev	Date	Drm	Chk'd	App'd	Description
M01	06/12/21	PP	JH	CA	ISSUE FOR PHASE 4: PLANNING

Client <b>NTA</b> Údarás Náisiúnta Iompair National Transport Authority		Engineering Designer <b>AECOM</b> <b>MOTT MACDONALD</b>			Programme Title <b>BUSCONNECTS DUBLIN CORE BUS CORRIDORS INFRASTRUCTURE WORKS</b>			
Date 06/12/21	Scale 1:500 @ A1 1:1000 @ A3	Drawn P.POCZATKO	Checked J.HAWE	Approved C.ACTON	Drawing Title <b>CLONGRIFFIN TO CITY CENTRE CORE BUS CORRIDOR SCHEME ESB ASSET ALTERATIONS</b>			
Project Code BCIDA	Originator Code ACM	QMS Code			Drawing File Name BCIDA-ACM-UTL_UE-0001_XX_00-DR-CU-0013	Sheet Number 13 of 21	Status A	Rev M01

DO NOT SCALE USE FIGURED DIMENSIONS ONLY



C:\Users\jpc3656\OneDrive - Mott MacDonald\Desktop\ESB\BCIDA-ACM\HUTL\_UE-0001\_XX\_00-DR-CU-0014.dwg



**LEGEND:**

---	EXISTING KERB LINE	---	PROPOSED KERB LINE
---	ESB - HIGH VOLTAGE - EXISTING UNDERGROUND	---	ESB - HIGH VOLTAGE - PROPOSED UNDERGROUND DIVERSION
---	ESB - HIGH VOLTAGE - EXISTING OVERHEAD	---	ESB - HIGH VOLTAGE - PROPOSED OVERHEAD DIVERSION
---	ESB - MEDIUM VOLTAGE - EXISTING UNDERGROUND	---	ESB - MEDIUM VOLTAGE - PROPOSED UNDERGROUND DIVERSION
---	ESB - MEDIUM VOLTAGE - EXISTING OVERHEAD	---	ESB - MEDIUM VOLTAGE - PROPOSED OVERHEAD DIVERSION
---	ESB - LOW VOLTAGE - EXISTING UNDERGROUND	---	ESB - LOW VOLTAGE - PROPOSED UNDERGROUND DIVERSION
---	ESB - LOW VOLTAGE - EXISTING OVERHEAD	---	ESB - LOW VOLTAGE - PROPOSED OVERHEAD DIVERSION
---	SITE BOUNDARY LINE	---	TEMPORARY LAND ACQUISITION
---	EXISTING NETWORK TO BE DECOMMISSIONED		

**NOTES:**

1. UTILITY LOCATIONS ARE INDICATIVE ONLY AND BASED ON UTILITY PROVIDER RECORDS

**Disclaimer**


a. © National Transport Authority (NTA) 2021. This drawing is confidential and the copyright in it is owned by NTA. This drawing must not be either loaned, copied or otherwise reproduced in whole or in part or used for any purpose without the prior permission of NTA.


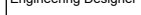

b. This drawing is to be used for the design element identified in the titleblock. Other information shown is to be considered indicative only. The drawing is to be read in conjunction with all other relevant design drawings.

c. O.S. data used for plans are printed under © Ordnance Survey Ireland Government of Ireland. All rights reserved. Licence Number 2021/OSI\_NMA\_180 National Transport Authority. All elevations are in metres and relate to OSI Geoid Model (OSGM15) Mean Head. All Co-ordinates are in Irish Transverse Mercator Grid (ITM) as defined by OSI active local GPS station.

d. Information concerning the position of apparatus shown on this drawing is based on drawings supplied by the utility owners and/or the utility works contractor, whilst every care has been taken in the preparation of this drawing, positions should be taken as approximate and are intended for general guidance only and no representation is made by the NTA as to the accuracy, completeness, sufficiency or otherwise of this drawing and the position of the apparatus. The information contained herein does not purport to be comprehensive or final as the apparatus is subject to being altered and/or superseded. Recipients should not rely on this information. Any liabilities are hereby expressly disclaimed.

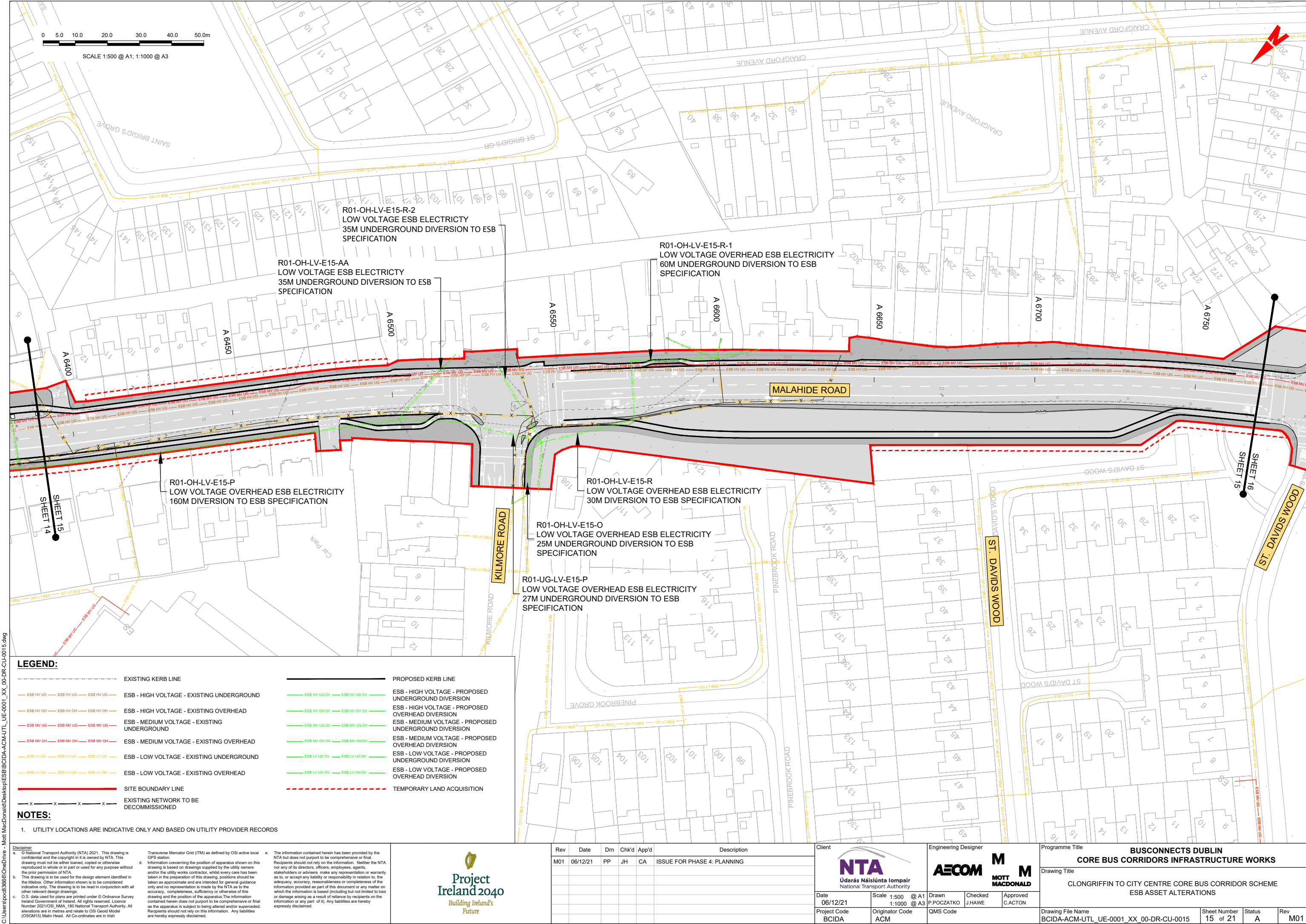
e. The information contained herein has been provided by the NTA but does not purport to be comprehensive or final. Recipients should not rely on the information. Neither the NTA nor any of its directors, officers, employees, agents, stakeholders or advisers make any representation or warranty as to, or accept any liability or responsibility in relation to, the adequacy, accuracy, reasonableness or completeness of the information provided as part of this document or any matter on which the information is based (including but not limited to loss or damage arising as a result of reliance by recipients on the information or any part of it). Any liabilities are hereby expressly disclaimed.

					
Rev	Date	Drm	Chk'd	App'd	Description
M01	06/12/21	PP	JH	CA	ISSUE FOR PHASE 4: PLANNING

Client		Engineering Designer			Programme Title					
 Údarás Náisiúnta Iompair National Transport Authority		 			BUSCONNECTS DUBLIN CORE BUS CORRIDORS INFRASTRUCTURE WORKS					
Date		Scale		Checked		Drawing Title				
06/12/21		1:500 @ A1 1:1000 @ A3		P.POCZATKO J.HAWE		CLONGRIFFIN TO CITY CENTRE CORE BUS CORRIDOR SCHEME ESB ASSET ALTERATIONS				
Project Code		Originator Code		QMS Code		Drawing File Name		Sheet Number	Status	Rev
BCIDA		ACM				BCIDA-ACM-UTL_UE-0001_XX_00-DR-CU-0014		14 of 21	A	M01

DO NOT SCALE USE FIGURED DIMENSIONS ONLY





LEGEND:

- |     |   |     |   |
|-----|---|-----|---|
| --- | EXISTING KERB LINE                          | --- | PROPOSED KERB LINE                                    |
| --- | ESB - HIGH VOLTAGE - EXISTING UNDERGROUND   | --- | ESB - HIGH VOLTAGE - PROPOSED UNDERGROUND DIVERSION   |
| --- | ESB - HIGH VOLTAGE - EXISTING OVERHEAD      | --- | ESB - HIGH VOLTAGE - PROPOSED OVERHEAD DIVERSION      |
| --- | ESB - MEDIUM VOLTAGE - EXISTING UNDERGROUND | --- | ESB - MEDIUM VOLTAGE - PROPOSED UNDERGROUND DIVERSION |
| --- | ESB - MEDIUM VOLTAGE - EXISTING OVERHEAD    | --- | ESB - MEDIUM VOLTAGE - PROPOSED OVERHEAD DIVERSION    |
| --- | ESB - LOW VOLTAGE - EXISTING UNDERGROUND    | --- | ESB - LOW VOLTAGE - PROPOSED UNDERGROUND DIVERSION    |
| --- | ESB - LOW VOLTAGE - EXISTING OVERHEAD       | --- | ESB - LOW VOLTAGE - PROPOSED OVERHEAD DIVERSION       |
| --- | SITE BOUNDARY LINE                          | --- | TEMPORARY LAND ACQUISITION                            |
| --- | EXISTING NETWORK TO BE DECOMMISSIONED       |     |   |

NOTES:

1. UTILITY LOCATIONS ARE INDICATIVE ONLY AND BASED ON UTILITY PROVIDER RECORDS

**Disclaimer**  
a. © National Transport Authority (NTA) 2021. This drawing is confidential and the copyright in it is owned by NTA. This drawing must not be either loaned, copied or otherwise reproduced in whole or in part or used for any purpose without the prior permission of NTA.  
b. This drawing is to be used for the design element identified in the titleblock. Other information shown is to be considered indicative only. The drawing is to be read in conjunction with all other relevant design drawings.  
c. O.S. data used for plans are printed under © Ordnance Survey Ireland Government of Ireland. All rights reserved. Licence Number 2021/OSI\_NMA\_180 National Transport Authority. All elevations are in metres and relate to OSI Geoid Model (OSGM15) Mean Head. All Co-ordinates are in Irish Transverse Mercator Grid (ITM) as defined by OSI active local GPS station.  
d. Information concerning the position of apparatus shown on this drawing is based on drawings supplied by the utility owners and/or the utility works contractor, whilst every care has been taken in the preparation of this drawing, positions should be taken as approximate and are intended for general guidance only and no representation is made by the NTA as to the accuracy, completeness, sufficiency or otherwise of this drawing and the position of the apparatus. The information contained herein does not purport to be comprehensive or final as the apparatus is subject to being altered and/or superceded. Recipients should not rely on this information. Any liabilities are hereby expressly disclaimed.  
e. The information contained herein has been provided by the NTA but does not purport to be comprehensive or final. Recipients should not rely on the information. Neither the NTA nor any of its directors, officers, employees, agents, stakeholders or advisers make any representation or warranty as to, or accept any liability or responsibility in relation to, the adequacy, accuracy, reasonableness or completeness of the information provided as part of this document or any matter on which the information is based (including but not limited to loss or damage arising as a result of reliance by recipients on the information or any part of it). Any liabilities are hereby expressly disclaimed.



Rev	Date	Drn	Chk'd	App'd	Description
M01	06/12/21	PP	JH	CA	ISSUE FOR PHASE 4: PLANNING

**NTA**  
Údarás Náisiúnta Iompair  
National Transport Authority

Date  
06/12/21

Project Code  
BCIDA

Scale  
1:500 @ A1  
1:1000 @ A3

Originator Code  
ACM

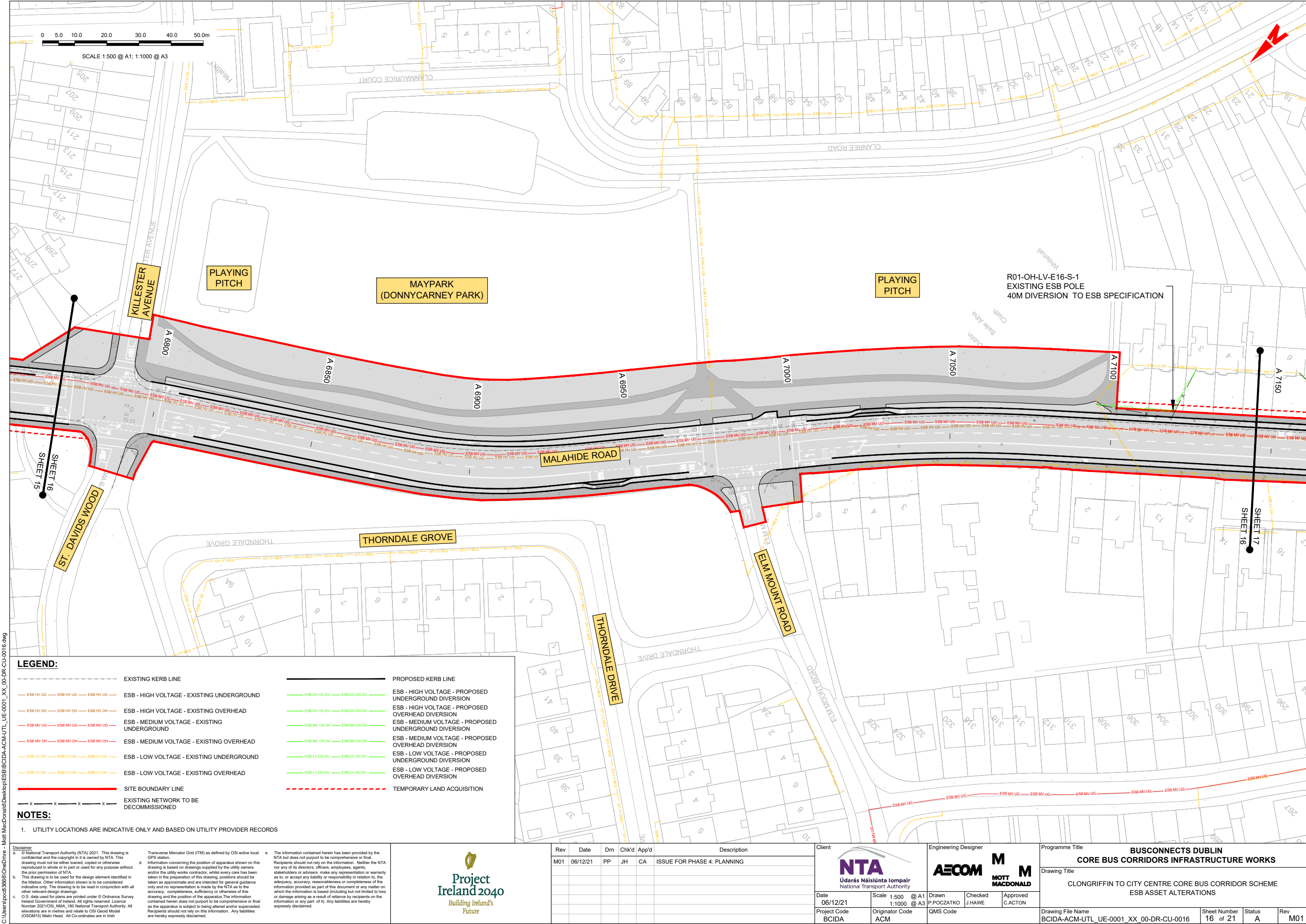
Engineering Designer  
**AECOM**

Checked  
J.HAWE

Approved  
C.ACTON

Programme Title <b>BUSCONNECTS DUBLIN CORE BUS CORRIDORS INFRASTRUCTURE WORKS</b>
Drawing Title CLONGRIFFIN TO CITY CENTRE CORE BUS CORRIDOR SCHEME ESB ASSET ALTERATIONS
Drawing File Name BCIDA-ACM-UTL_UE-0001_XX_00-DR-CU-0015
Sheet Number 15 of 21
Status A
Rev M01





LEGEND:

- EXISTING KERB LINE
- ESB - HIGH VOLTAGE - EXISTING UNDERGROUND
- ESB - HIGH VOLTAGE - EXISTING OVERHEAD
- ESB - MEDIUM VOLTAGE - EXISTING UNDERGROUND
- ESB - MEDIUM VOLTAGE - EXISTING OVERHEAD
- ESB - LOW VOLTAGE - EXISTING UNDERGROUND
- ESB - LOW VOLTAGE - EXISTING OVERHEAD
- SITE BOUNDARY LINE
- EXISTING NETWORK TO BE DECOMMISSIONED
- PROPOSED KERB LINE
- ESB - HIGH VOLTAGE - PROPOSED UNDERGROUND DIVERSION
- ESB - HIGH VOLTAGE - PROPOSED OVERHEAD DIVERSION
- ESB - MEDIUM VOLTAGE - PROPOSED UNDERGROUND DIVERSION
- ESB - MEDIUM VOLTAGE - PROPOSED OVERHEAD DIVERSION
- ESB - LOW VOLTAGE - PROPOSED UNDERGROUND DIVERSION
- ESB - LOW VOLTAGE - PROPOSED OVERHEAD DIVERSION
- TEMPORARY LAND ACQUISITION

NOTES:

- 1. UTILITY LOCATIONS ARE INDICATIVE ONLY AND BASED ON UTILITY PROVIDER RECORDS

Disclaimer  
a. © National Transport Authority (NTA) 2021. This drawing is confidential and the copyright in it is owned by NTA. This drawing must not be either loaned, copied or otherwise reproduced in whole or in part or used for any purpose without the prior permission of NTA.  
b. This drawing is to be used for the design element identified in the titleblock. Other information shown is to be considered indicative only. The drawing is to be read in conjunction with all other relevant design drawings.  
c. O.S. data used for plans are printed under © Ordnance Survey Ireland Government of Ireland. All rights reserved. Licence Number 2021/OSI\_NMA\_180 National Transport Authority. All elevations are in metres and relate to OSI Geoid Model (OSGM15) Mean Head. All Co-ordinates are in Irish Transverse Mercator Grid (ITM) as defined by OSI active local GPS station.  
d. Information concerning the position of apparatus shown on this drawing is based on drawings supplied by the utility owners and/or the utility works contractor, whilst every care has been taken in the preparation of this drawing, positions should be taken as approximate and are intended for general guidance only and no representation is made by the NTA as to the accuracy, completeness, sufficiency or otherwise of this drawing and the position of the apparatus. The information contained herein does not purport to be comprehensive or final as the apparatus is subject to being altered and/or superceded. Recipients should not rely on this information. Any liabilities are hereby expressly disclaimed.  
e. The information contained herein has been provided by the NTA but does not purport to be comprehensive or final. Recipients should not rely on the information. Neither the NTA nor any of its directors, officers, employees, agents, stakeholders or advisers make any representation or warranty as to, or accept any liability or responsibility in relation to, the adequacy, accuracy, reasonableness or completeness of the information provided as part of this document or any matter on which the information is based (including but not limited to loss or damage arising as a result of reliance by recipients on the information or any part of it). Any liabilities are hereby expressly disclaimed.



Rev	Date	Drm	Chk'd	App'd	Description
M01	06/12/21	PP	JH	CA	ISSUE FOR PHASE 4: PLANNING

Client  
**NTA**  
Údarás Náisiúnta Iompair  
National Transport Authority

Engineering Designer  
**AECOM**  
**MOTT MACDONALD**

Programme Title  
**BUSCONNECTS DUBLIN  
CORE BUS CORRIDORS INFRASTRUCTURE WORKS**

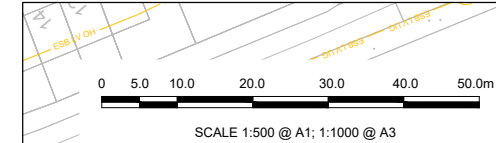
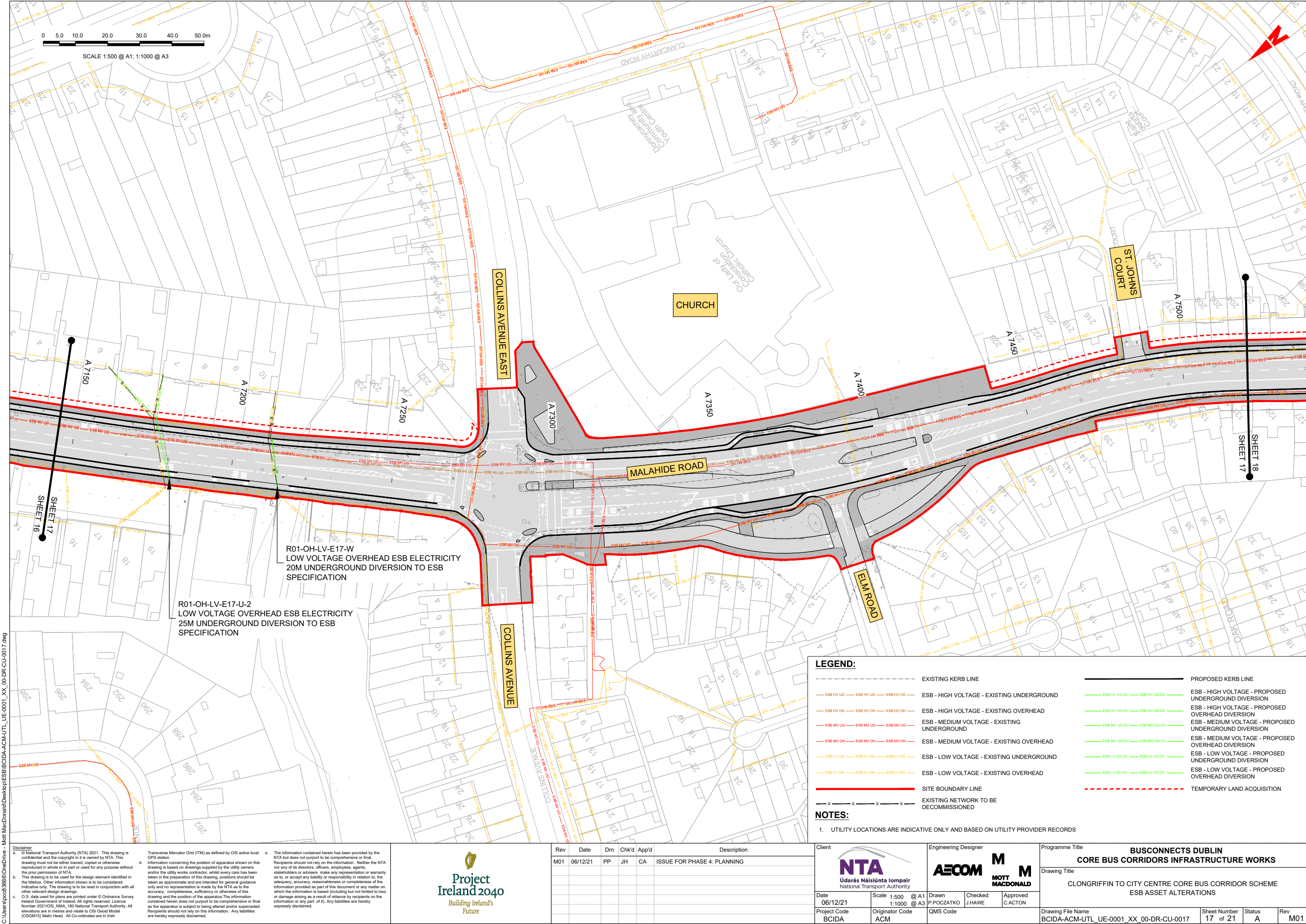
Drawing Title  
**CLONGRIFFIN TO CITY CENTRE CORE BUS CORRIDOR SCHEME  
ESB ASSET ALTERATIONS**

Date 06/12/21	Scale 1:500 @ A1 1:1000 @ A3	Drawn P.POCZATKO	Checked J.HAWE	Approved C.ACTON
Project Code BCIDA	Originator Code ACM	QMS Code		

Drawing File Name BCIDA-ACM-UTL_UE-0001_XX_00-DR-CU-0016	Sheet Number 16 of 21	Status A	Rev M01
---	--------------------------	-------------	------------

DO NOT SCALE USE FIGURED DIMENSIONS ONLY





LEGEND:

	EXISTING KERB LINE		PROPOSED KERB LINE
	ESB - HIGH VOLTAGE - EXISTING UNDERGROUND		ESB - HIGH VOLTAGE - PROPOSED UNDERGROUND DIVERSION
	ESB - HIGH VOLTAGE - EXISTING OVERHEAD		ESB - HIGH VOLTAGE - PROPOSED OVERHEAD DIVERSION
	ESB - MEDIUM VOLTAGE - EXISTING UNDERGROUND		ESB - MEDIUM VOLTAGE - PROPOSED UNDERGROUND DIVERSION
	ESB - MEDIUM VOLTAGE - EXISTING OVERHEAD		ESB - MEDIUM VOLTAGE - PROPOSED OVERHEAD DIVERSION
	ESB - LOW VOLTAGE - EXISTING UNDERGROUND		ESB - LOW VOLTAGE - PROPOSED UNDERGROUND DIVERSION
	ESB - LOW VOLTAGE - EXISTING OVERHEAD		ESB - LOW VOLTAGE - PROPOSED OVERHEAD DIVERSION
	SITE BOUNDARY LINE		TEMPORARY LAND ACQUISITION
	EXISTING NETWORK TO BE DECOMMISSIONED		

NOTES:

1. UTILITY LOCATIONS ARE INDICATIVE ONLY AND BASED ON UTILITY PROVIDER RECORDS

**Disclaimer**  
a. © National Transport Authority (NTA) 2021. This drawing is confidential and the copyright in it is owned by NTA. This drawing must not be either loaned, copied or otherwise reproduced in whole or in part or used for any purpose without the prior permission of NTA.  
b. This drawing is to be used for the design element identified in the titleblock. Other information shown is to be considered indicative only. The drawing is to be read in conjunction with all other relevant design drawings.  
c. O.S. data used for plans are printed under © Ordnance Survey Ireland Government of Ireland. All rights reserved. Licence Number 2021/OSI\_NMA\_180 National Transport Authority. All elevations are in metres and relate to OSI Geoid Model (OSGM15) Mean Head. All Co-ordinates are in Irish Transverse Mercator Grid (ITM) as defined by OSI active local GPS station.  
d. Information concerning the position of apparatus shown on this drawing is based on drawings supplied by the utility owners and/or the utility works contractor, whilst every care has been taken in the preparation of this drawing, positions should be taken as approximate and are intended for general guidance only and no representation is made by the NTA as to the accuracy, completeness, sufficiency or otherwise of the information provided as part of this document or any matter on which the information is based (including but not limited to loss or damage arising as a result of reliance by recipients on the information or any part of it). Any liabilities are hereby expressly disclaimed.  
e. The information contained herein has been provided by the NTA but does not purport to be comprehensive or final. Recipients should not rely on the information. Neither the NTA nor any of its directors, officers, employees, agents, stakeholders or advisers make any representation or warranty as to, or accept any liability or responsibility in relation to, the adequacy, accuracy, reasonableness or completeness of the information provided as part of this document or any matter on which the information is based (including but not limited to loss or damage arising as a result of reliance by recipients on the information or any part of it). Any liabilities are hereby expressly disclaimed.



Rev	Date	Drm	Chk'd	App'd	Description
M01	06/12/21	PP	JH	CA	ISSUE FOR PHASE 4: PLANNING

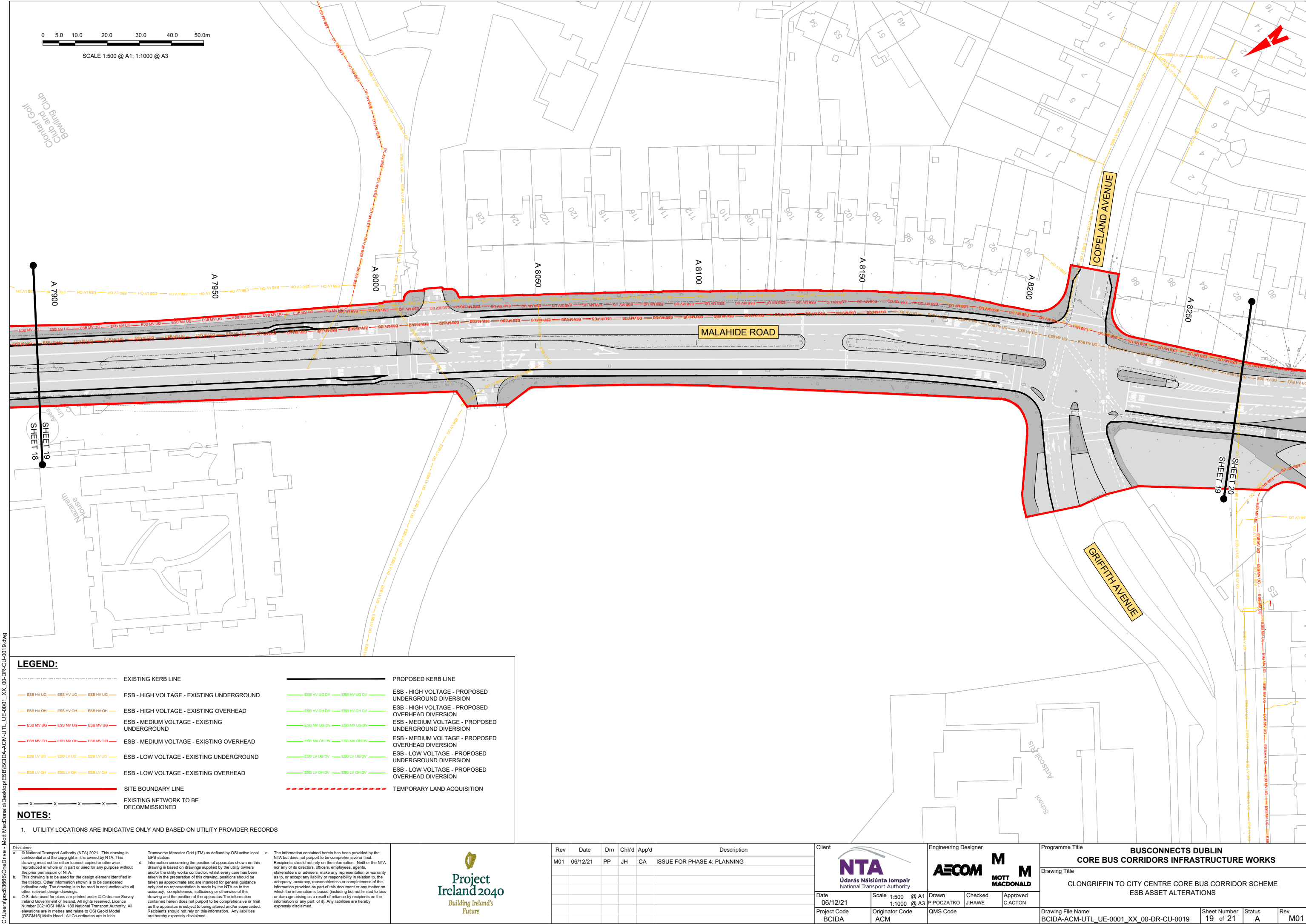
Client <b>NTA</b> Údarás Náisiúnta Iompair National Transport Authority		Engineering Designer <b>AECOM</b> <b>M</b> <b>MOTT MACDONALD</b>			Programme Title <b>BUSCONNECTS DUBLIN CORE BUS CORRIDORS INFRASTRUCTURE WORKS</b>			
Date 06/12/21	Scale 1:500 @ A1 1:1000 @ A3	Drawn P.POCZATKO	Checked J.HAWE	Approved C.ACTON	Drawing Title <b>CLONGRIFFIN TO CITY CENTRE CORE BUS CORRIDOR SCHEME ESB ASSET ALTERATIONS</b>			
Project Code BCIDA	Originator Code ACM	QMS Code			Drawing File Name BCIDA-ACM-UTL_UE-0001_XX_00-DR-CU-0017	Sheet Number 17 of 21	Status A	Rev M01

DO NOT SCALE USE FIGURED DIMENSIONS ONLY









LEGEND:

	EXISTING KERB LINE		PROPOSED KERB LINE
	ESB - HIGH VOLTAGE - EXISTING UNDERGROUND		ESB - HIGH VOLTAGE - PROPOSED UNDERGROUND DIVERSION
	ESB - HIGH VOLTAGE - EXISTING OVERHEAD		ESB - HIGH VOLTAGE - PROPOSED OVERHEAD DIVERSION
	ESB - MEDIUM VOLTAGE - EXISTING UNDERGROUND		ESB - MEDIUM VOLTAGE - PROPOSED UNDERGROUND DIVERSION
	ESB - MEDIUM VOLTAGE - EXISTING OVERHEAD		ESB - MEDIUM VOLTAGE - PROPOSED OVERHEAD DIVERSION
	ESB - LOW VOLTAGE - EXISTING UNDERGROUND		ESB - LOW VOLTAGE - PROPOSED UNDERGROUND DIVERSION
	ESB - LOW VOLTAGE - EXISTING OVERHEAD		ESB - LOW VOLTAGE - PROPOSED OVERHEAD DIVERSION
	SITE BOUNDARY LINE		TEMPORARY LAND ACQUISITION
	EXISTING NETWORK TO BE DECOMMISSIONED		

NOTES:

1. UTILITY LOCATIONS ARE INDICATIVE ONLY AND BASED ON UTILITY PROVIDER RECORDS

**Disclaimer**  
a. © National Transport Authority (NTA) 2021. This drawing is confidential and the copyright in it is owned by NTA. This drawing must not be either loaned, copied or otherwise reproduced in whole or in part or used for any purpose without the prior permission of NTA.  
b. This drawing is to be used for the design element identified in the titlebox. Other information shown is to be considered indicative only. The drawing is to be read in conjunction with all other relevant design drawings.  
c. O.S. data used for plans are printed under © Ordnance Survey Ireland Government of Ireland. All rights reserved. Licence Number 2021/OSI\_NMA\_180 National Transport Authority. All elevations are in metres and relate to OSI Geoid Model (OSGM15) Mean Head. All Co-ordinates are in Irish Transverse Mercator Grid (ITM) as defined by OSI active local GPS station.  
d. Information concerning the position of apparatus shown on this drawing is based on drawings supplied by the utility owners and/or the utility works contractor, whilst every care has been taken in the preparation of this drawing, positions should be taken as approximate and are intended for general guidance only and no representation is made by the NTA as to the accuracy, completeness, sufficiency or otherwise of this drawing and the position of the apparatus. The information contained herein does not purport to be comprehensive or final as the apparatus is subject to being altered and/or superceded. Recipients should not rely on this information. Any liabilities are hereby expressly disclaimed.  
e. The information contained herein has been provided by the NTA but does not purport to be comprehensive or final. Recipients should not rely on the information. Neither the NTA nor any of its directors, officers, employees, agents, stakeholders or advisers make any representation or warranty as to, or accept any liability or responsibility in relation to, the adequacy, accuracy, reasonableness or completeness of the information provided as part of this document or any matter on which the information is based (including but not limited to loss or damage arising as a result of reliance by recipients on the information or any part of it). Any liabilities are hereby expressly disclaimed.



Rev	Date	Drm	Chk'd	App'd	Description
M01	06/12/21	PP	JH	CA	ISSUE FOR PHASE 4: PLANNING

Údarás Náisiúnta Iompair  
National Transport Authority

Date  
06/12/21

Project Code  
BCIDA

Scale  
1:500 @ A1  
1:1000 @ A3

Originator Code  
ACM

Engineering Designer

Drawn  
P.POCZATKO

Checked  
J.HAWE

Approved  
C.ACTON

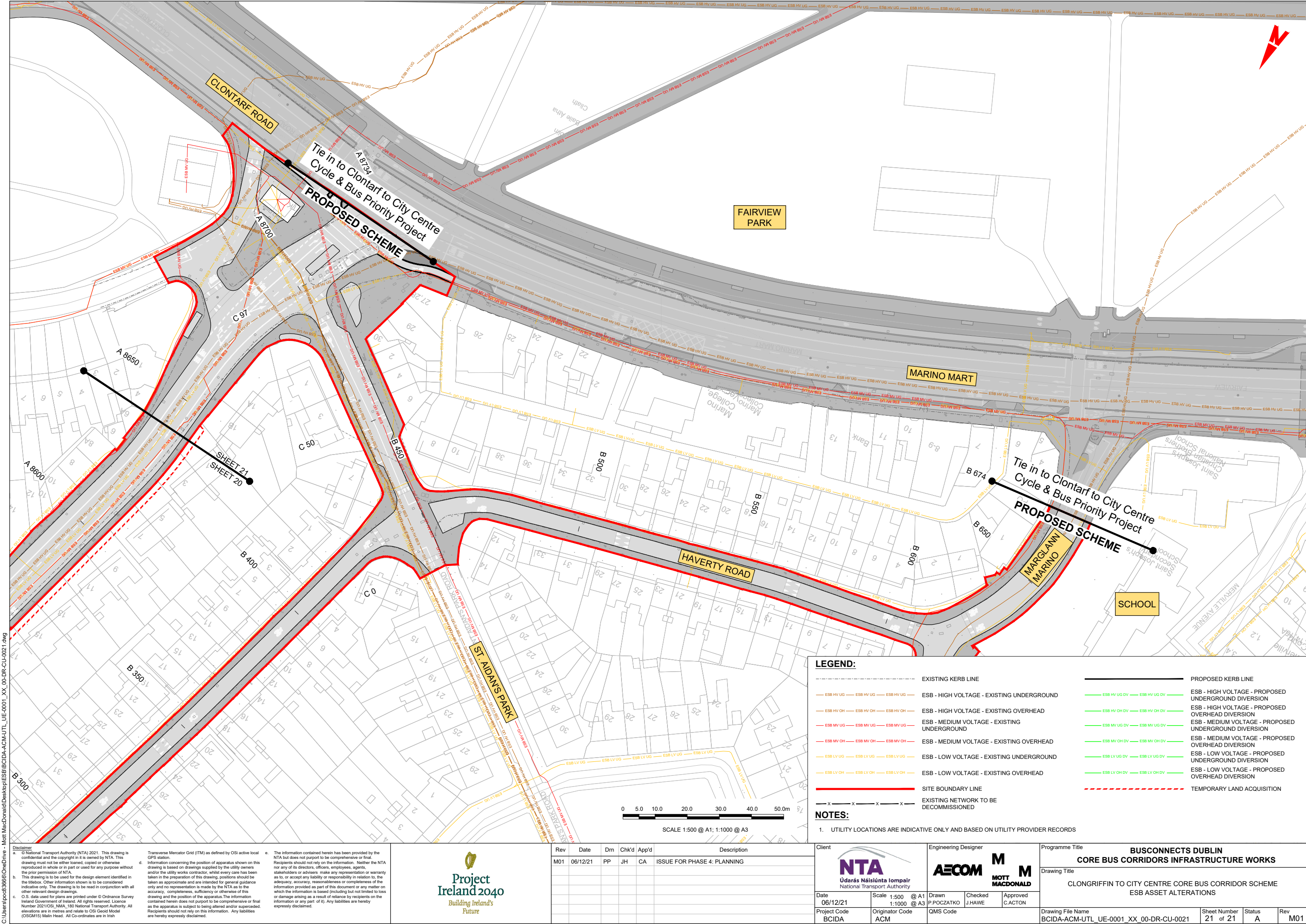
QMS Code

Programme Title <b>BUSCONNECTS DUBLIN CORE BUS CORRIDORS INFRASTRUCTURE WORKS</b>			
Drawing Title CLONGRIFFIN TO CITY CENTRE CORE BUS CORRIDOR SCHEME ESB ASSET ALTERATIONS			
Drawing File Name BCIDA-ACM-UTL_UE-0001_XX_00-DR-CU-0019	Sheet Number 19 of 21	Status A	Rev M01









C:\Users\jpc23656\OneDrive - Mott MacDonald\Desktop\ESB\BCIDA-ACM\HUTL\_UE-0001\_XX\_00-DR-CU-0021.dwg

**Disclaimer**  
a. © National Transport Authority (NTA) 2021. This drawing is confidential and the copyright in it is owned by NTA. This drawing must not be either loaned, copied or otherwise reproduced in whole or in part or used for any purpose without the prior permission of NTA.  
b. This drawing is to be used for the design element identified in the titleblock. Other information shown is to be considered indicative only. The drawing is to be read in conjunction with all other relevant design drawings.  
c. O.S. data used for plans are printed under © Ordnance Survey Ireland Government of Ireland. All rights reserved. Licence Number 2021/OSI\_NMA\_180 National Transport Authority. All elevations are in metres and relate to OSI Geoid Model (OSGM15) Mean Head. All Co-ordinates are in Irish Transverse Mercator Grid (ITM) as defined by OSI active local GPS station.  
d. Information concerning the position of apparatus shown on this drawing is based on drawings supplied by the utility owners and/or the utility works contractor, whilst every care has been taken in the preparation of this drawing, positions should be taken as approximate and are intended for general guidance only and no representation is made by the NTA as to the accuracy, completeness, sufficiency or otherwise of this drawing and the position of the apparatus. The information contained herein does not purport to be comprehensive or final as the apparatus is subject to being altered and/or superseded. Recipients should not rely on this information. Any liabilities are hereby expressly disclaimed.  
e. The information contained herein has been provided by the NTA but does not purport to be comprehensive or final. Recipients should not rely on the information. Neither the NTA nor any of its directors, officers, employees, agents, stakeholders or advisers make any representation or warranty as to, or accept any liability or responsibility in relation to, the adequacy, accuracy, reasonableness or completeness of the information provided as part of this document or any matter on which the information is based (including but not limited to loss or damage arising as a result of reliance by recipients on the information or any part of it). Any liabilities are hereby expressly disclaimed.



Rev	Date	Drm	Chk'd	App'd	Description
M01	06/12/21	PP	JH	CA	ISSUE FOR PHASE 4: PLANNING

Client  
**NTA**  
Údarás Náisiúnta Iompair  
National Transport Authority

Date  
06/12/21

Project Code  
BCIDA

Engineering Designer  
**AECOM**  
P.POCZATKO

Checked  
J.HAWE

Approved  
C.ACTON

Programme Title  
**BUSCONNECTS DUBLIN  
CORE BUS CORRIDORS INFRASTRUCTURE WORKS**

Drawing Title  
CLONGRIFFIN TO CITY CENTRE CORE BUS CORRIDOR SCHEME  
ESB ASSET ALTERATIONS

Drawing File Name  
BCIDA-ACM-UTL\_UE-0001\_XX\_00-DR-CU-0021

Sheet Number  
21 of 21

Status  
A

Rev  
M01

DO NOT SCALE USE FIGURED DIMENSIONS ONLY





Údarás Náisiúnta Iompair  
National Transport Authority

National Transport Authority  
Dún Scéine  
Harcourt Lane  
Dublin 2  
D02 WT20



Project Ireland 2040  
*Building Ireland's Future*